



SAP for Manufacturing

In today's competitive marketplace, distributors, wholesalers, and manufacturers must fight to create and maintain a competition advantage. In order to do so, many manufacturing-oriented companies look to drive costs down, while **maintaining product integrity without sacrificing quantity and/or quality**.

Consequently, these companies must **better manage both fixed and variable WIP costs, without unnecessarily disrupting manufacturing**.

SAP enables your company to **lower operational** and engineering costs while **improving quality control** on job-related and production-based orders. SAP tracks production routing steps, job process scheduling, and job costs, with all labor, overhead, outside services, and materials used.

SAP allows users to create production orders right from a sales order screen. Purchase orders & outside service requisitions can also be automatically created during this process, allowing your company to **better set & meet** delivery dates and customer expectations.

SAP's integrated solutions also provide **revision control** for engineering changes to Bills of Material.

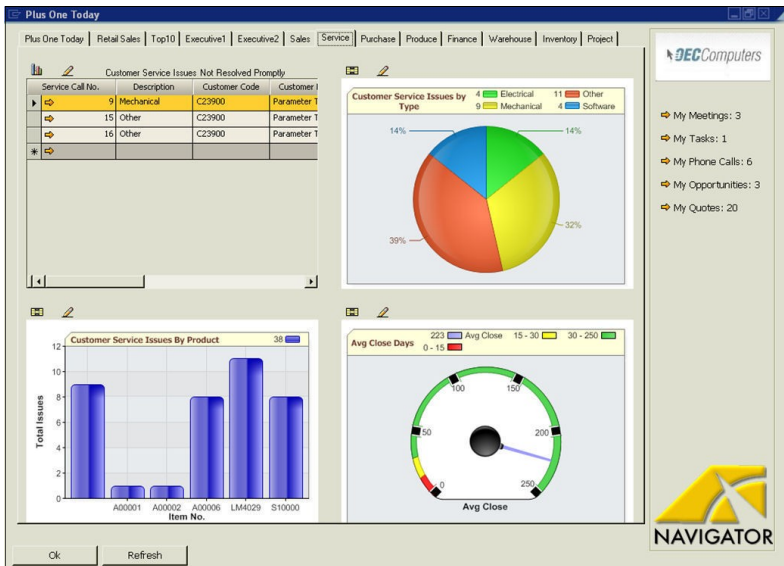
With the above in mind, SAP **offers real-time** access to critical business information so you can make **better informed decisions** that move your company forward, enabling **growth, efficiency & profitability**.



Core Functionality—SAP for Manufacturing

Job Costing, Scheduling & Planning	Data Collection	CRM / Contact Management	Banking & Accounting
<ul style="list-style-type: none"> Extends SAP production orders Supports make to stock, make to order Routing, operations, & Work Centers Product scheduling with Gantt view Advanced planning & scheduling options 	<ul style="list-style-type: none"> Bar Code, keyboard, or Touchscreen data entry on any PC, PDA, Toughbook Back flush material by operation Kanban reporting Production status tracking View work instructions, drawings, videos 	<ul style="list-style-type: none"> View pipelines & customer statuses in real time Know next steps for every customer/prospects Know how other departments are interacting with customers/prospects Manages more successful, more profitable relationships 	<ul style="list-style-type: none"> Better manage all aspects of company banking Run all checks, bank reconciliations, and accounting functions all from within SAP Embedded payment wizard allows scheduling, account selection, draft dates; supports multi-currency and unlimited G/L accounts
Industry-Specific Functionality	Quality Management, Revision Control, & Estimating	Real-Time Reporting	
<ul style="list-style-type: none"> Ideal for companies in more than 40 industries Based on best business practices developed with industry leaders Portfolio of industry solutions and built on consistent technology 	<ul style="list-style-type: none"> Collect data from anywhere on the shop/production floor Record scrap during operation and rework phases Develop more accurate estimates utilizing fixed & variable costs 	<ul style="list-style-type: none"> Drag & relate reporting Supports XL Reporter & Plus One Today dashboards Shop traveler, shop dispatch, WIP, job costing, resource loading, scrap analysis, etc. 	

Dashboards—in real-time, giving everyone in your business the business critical information they need, at anytime



The Right Information, At the Right Time.

With up-to-the-minute information, that can be viewed from anywhere at anytime, SAP dramatically enhances your visibility into your company's processes, enabling you to eliminate costly inefficiencies, while driving profitability and productivity to new levels.

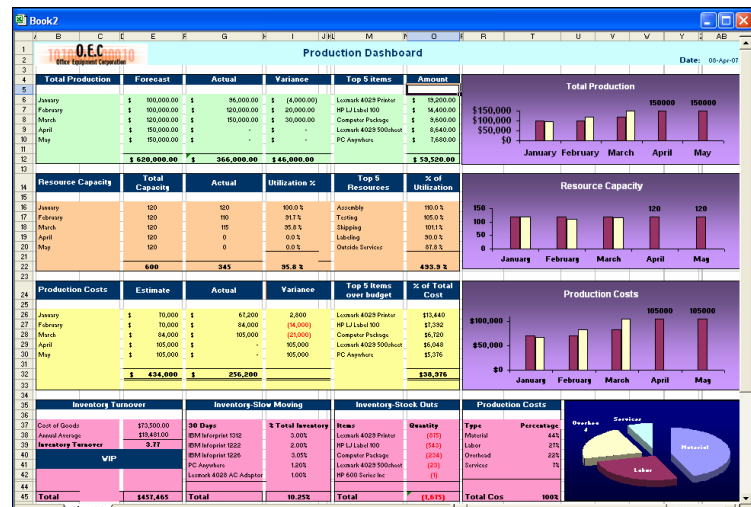
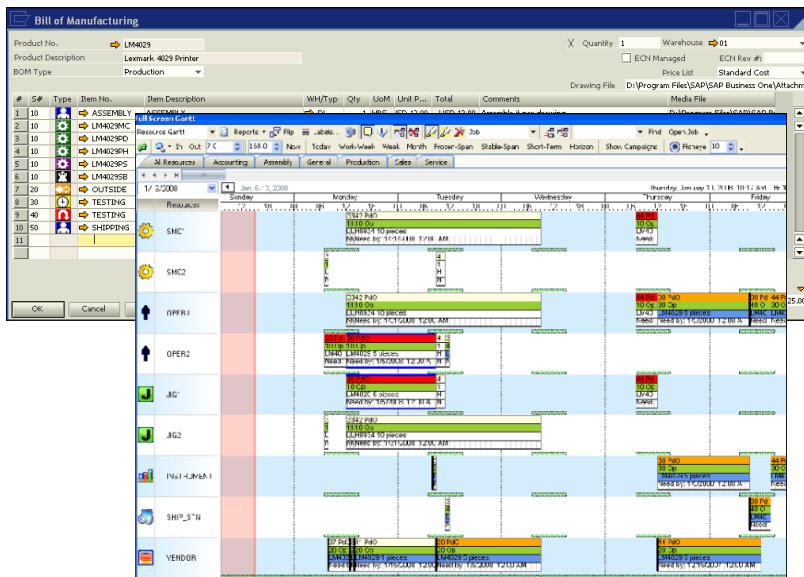
SAP, when combined with Navigator's *Data Collect One*, creates a robust end-to-end solution, enabling your workers further to capture quality data at each routing step on the shop floor and receiving inspection.

Data Collect One can be deployed in a variety of ways to suit an individual organization's needs, including touch screen entry, bar code data collection, or manual data entry directly into a PC/ Handheld screen.

SAP's manufacturing capabilities include predefined packaged cost accounting reports, which improve visibility in order to improve operational profitability. Users can create custom reports using Navigator's Plus One suite revealing up-to-the-minute critical business information.



Graphical Forecasts & Analyses—Allowing you to capitalize on every stage of the manufacturing process



Better set & meet delivery dates and customer expectations via fully visible production dashboard

What People Say About SAP & Navigator

Your Trusted SAP Partner, Making Every Customer a Best-Run Business

"I want to thank you and the whole Navigator team for working with us. I am very impressed with your company, and I am excited to be working with you and I look forward to a long-term relationship. Thank you again!"

President & CEO, UFI Inc./ Makkah Outlet



"SAP was able to integrate every single part of our business under one roof, so that sales, distribution, and customer service all were able to work in tandem."



CFO, YakPak

"Prior to selecting SAP, our biggest pain point was a lack of control and visibility into our inventory at all levels of the supply chain, but no more. SAP offers the scalability to grow as our company grows, as well as a full featured product from the start without requiring multiple add-ons."



VP Finance, Skullcandy

Live SAP Web Demos Hosted Every Friday at 11 AM EST / 8 AM PST—Visit our Website to Register Today!



ATLANTA—BOSTON—CHARLOTTE—CINCINNATI—CHICAGO—DALLAS—DENVER—HOUSTON—LAS VEGAS—LOS ANGELES—MINNEAPOLIS
NEW ORLEANS—NEW YORK—PHILADELPHIA—PITTSBURGH—PROVIDENCE—SALT LAKE CITY—SEATTLE—SAN JOSE—ST. LOUIS—TAMPA—TULSA

WWW.NBS-US.COM | 801.642.0123 | INFO@NBS-US.COM

